

Features

- USB / Ethernet Control
- Control SW included.
- Low Power Cold Switching
- Insertion Loss 3.5dB
- Isolation 75dB
- 50 Ohm Matched



Typical Applications

- Wireless Infrastructure
- 5G communication
- Test and measurement Instrument

RF Microwave & VSAT
Fiber Optics

Parameters	Min.	Typ.	Max.	Min.	Typ.	Max.	Min.	Typ.	Max.	Units
Frequency Range	0.02		6	6		12	12		18	GHz
Insertion Loss		1.8	2.5		2.8	3.5		4.0	4.5	dB
Insertion Loss Temperature Coefficient		0.003			0.003			0.003		dB/ ° C
Isolation	60	75		60	70		60	65		dB
Input VSWR		1.8	2.0		1.6	2.0		1.8	2.0	: 1
Output VSWR		1.8	2.0		1.6	2.0		1.8	2.0	: 1
RF Input Power (CW)			30			30			30	dBm
DC Power Dissipation		1.1			1.1			1.1		W
0.1dB Compression Point (P 0.1dB)		30			30			30		dBm
IIP3		41			40			39		dBm
Bias Current	300 Max.									mA
Power Supply	USB(+5.0V)									
Control Interface	USB2.0 & Ethernet(IPv4) (Control Cable Included)									
Weight	3.1 Max.									Ounce s
Input / Output Connectors	SMA-Female									
Finish	Nickel Plated									
Material	Aluminum									
Sealing	Hermetically Sealed (Optional)									

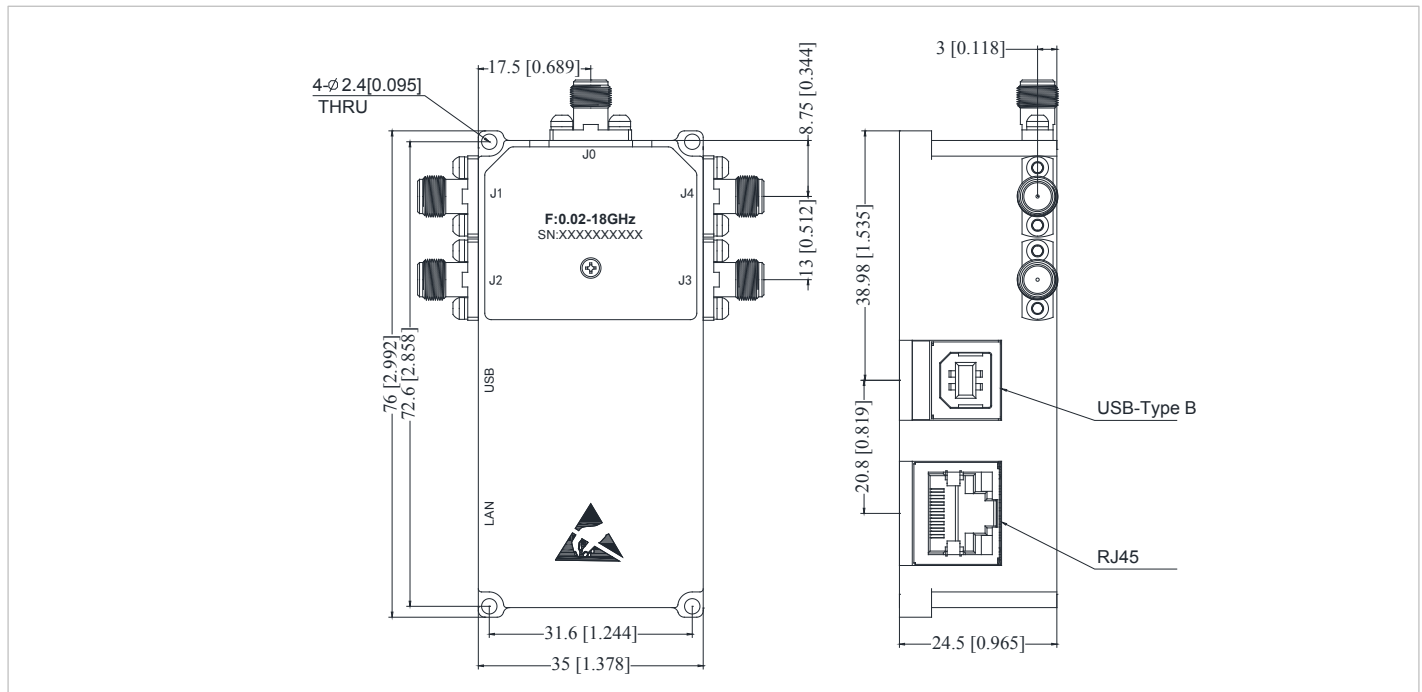
Ordering Information

Part No.	Description
SSA040P0218J	SP4T 0.02-18GHz PIN Diode Switch

Environmental Specifications

Operational Temperature	-40°C~+85°C (Case Temperature)
Storage Temperature	-50°C~+105°C
Vibration	25g RMS (15 degrees 2KHz) endurance, 1 hour per axis
Shock	20G for 11msec half sine wave,3 axis both directions

Outline Drawing:

 All Dimensions in mm (inches) Housing Tolerances ± 0.1 (0.004)


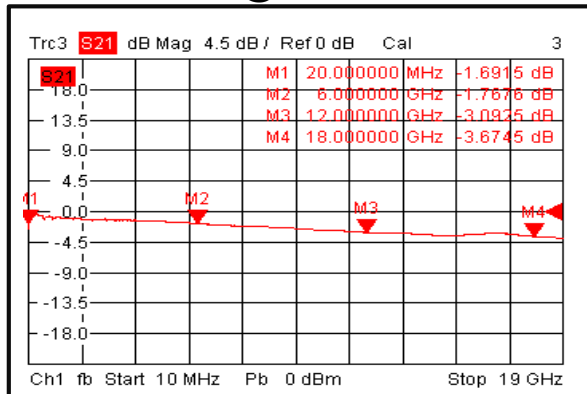
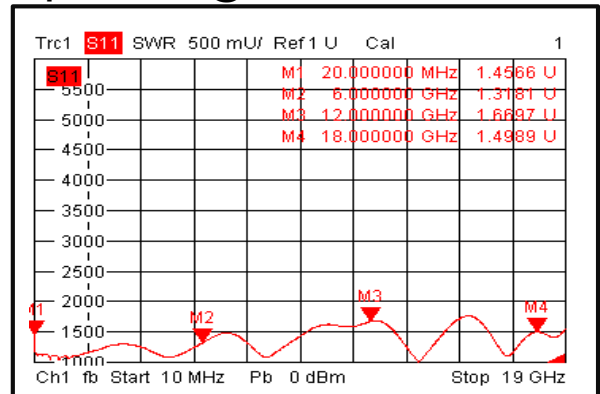
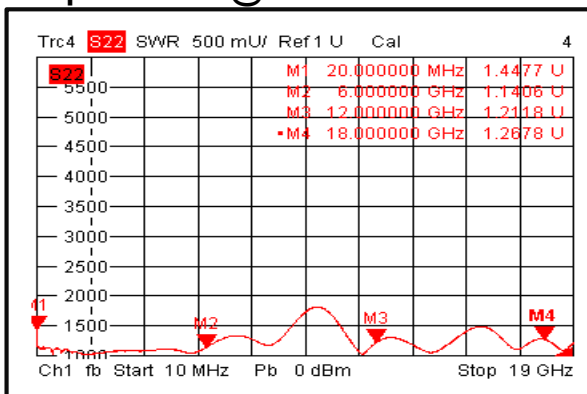
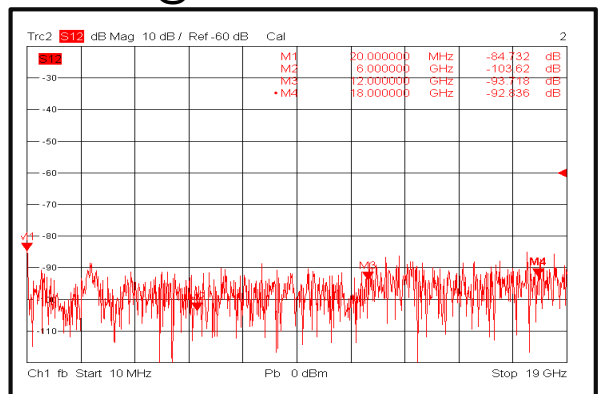
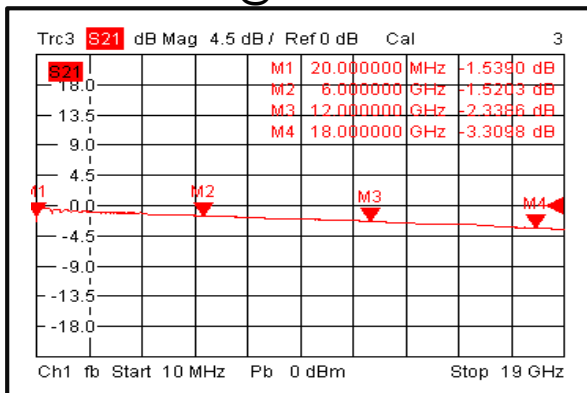
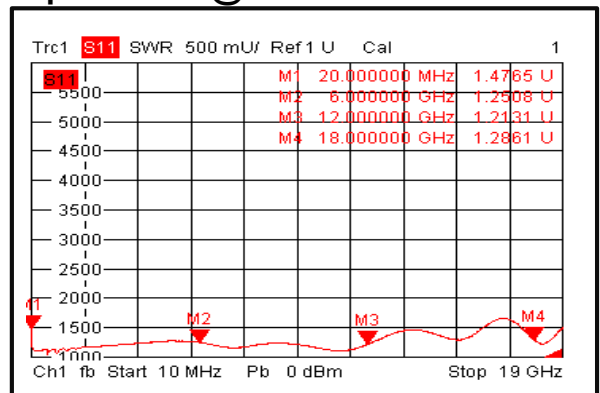
ID	Packing List	QTY
1	Fig a. USB/Ethernet Control RF Switch	1
2	Fig b. USB2.0 Cable (5 feet / 1.5 meter)	1
3	Fig c. Network Cable (6 feet / 2 meter)	1

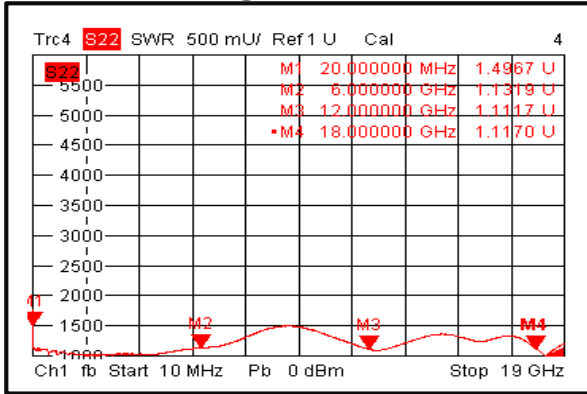
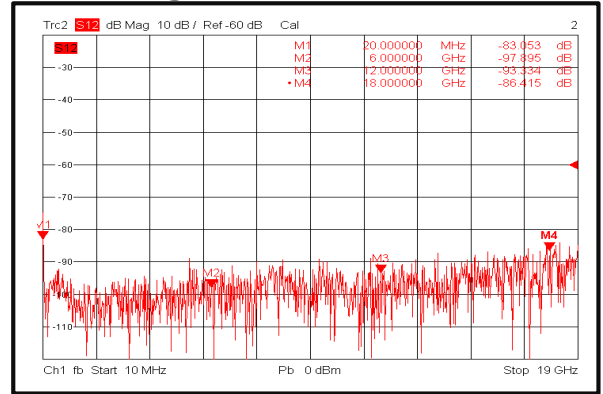
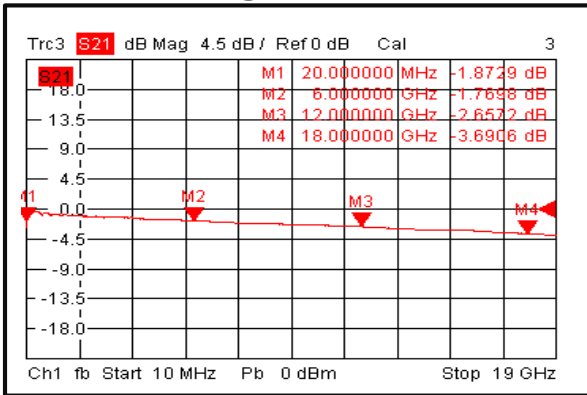
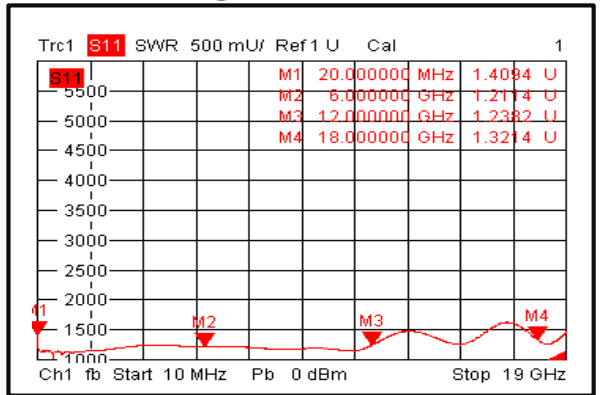
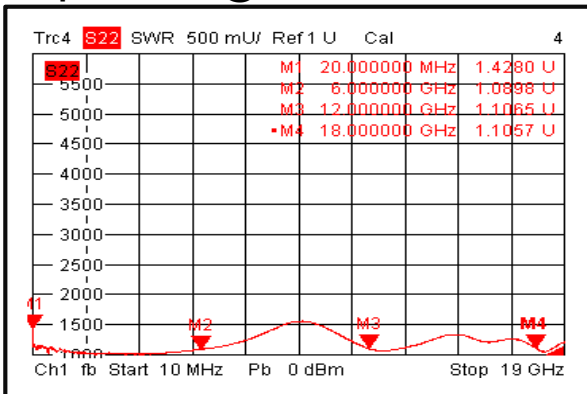
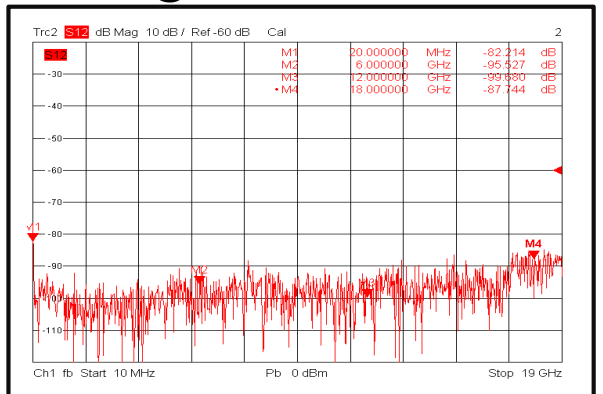


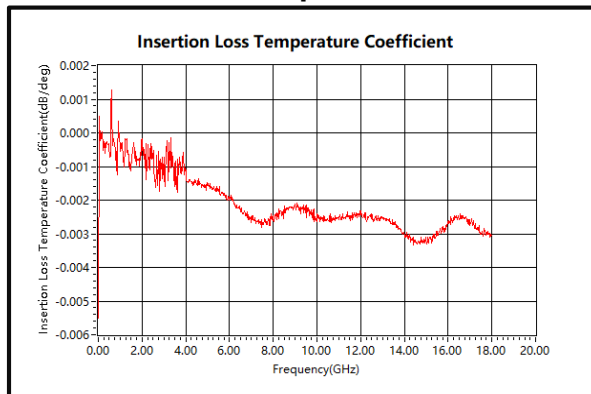
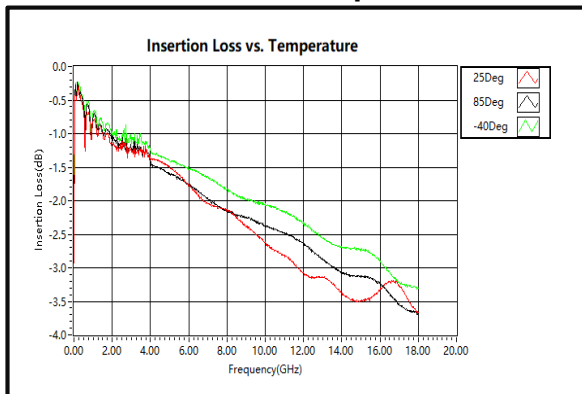
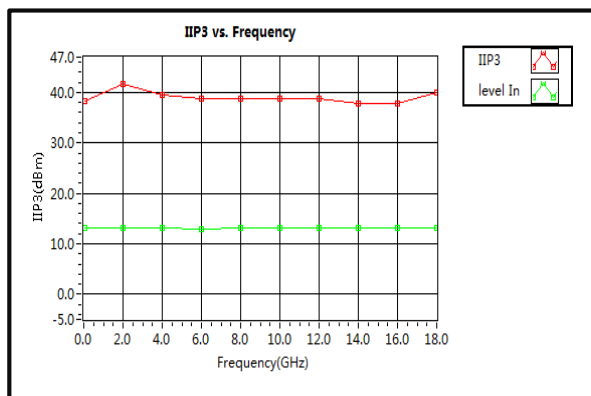
Fig b.



Fig c.

Insertion Loss @+25°C

Input VSWR @+25°C

Output VSWR @+25°C

Isolation @+25°C

Insertion Loss @-40°C

Input VSWR @-40°C


Output VSWR @-40°C

Isolation @-40°C

Insertion Loss @+85°C

Input VSWR @+85°C

Output VSWR @+85°C

Isolation @+85°C


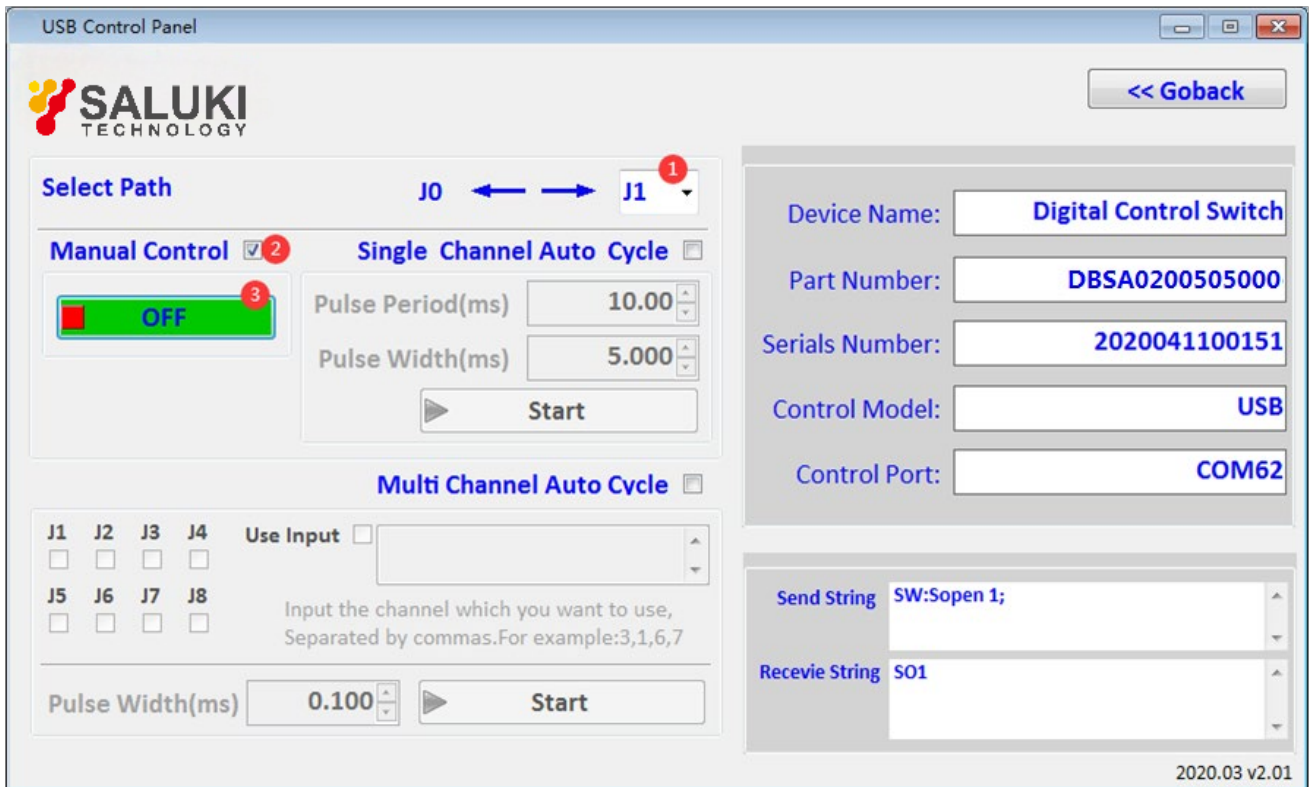
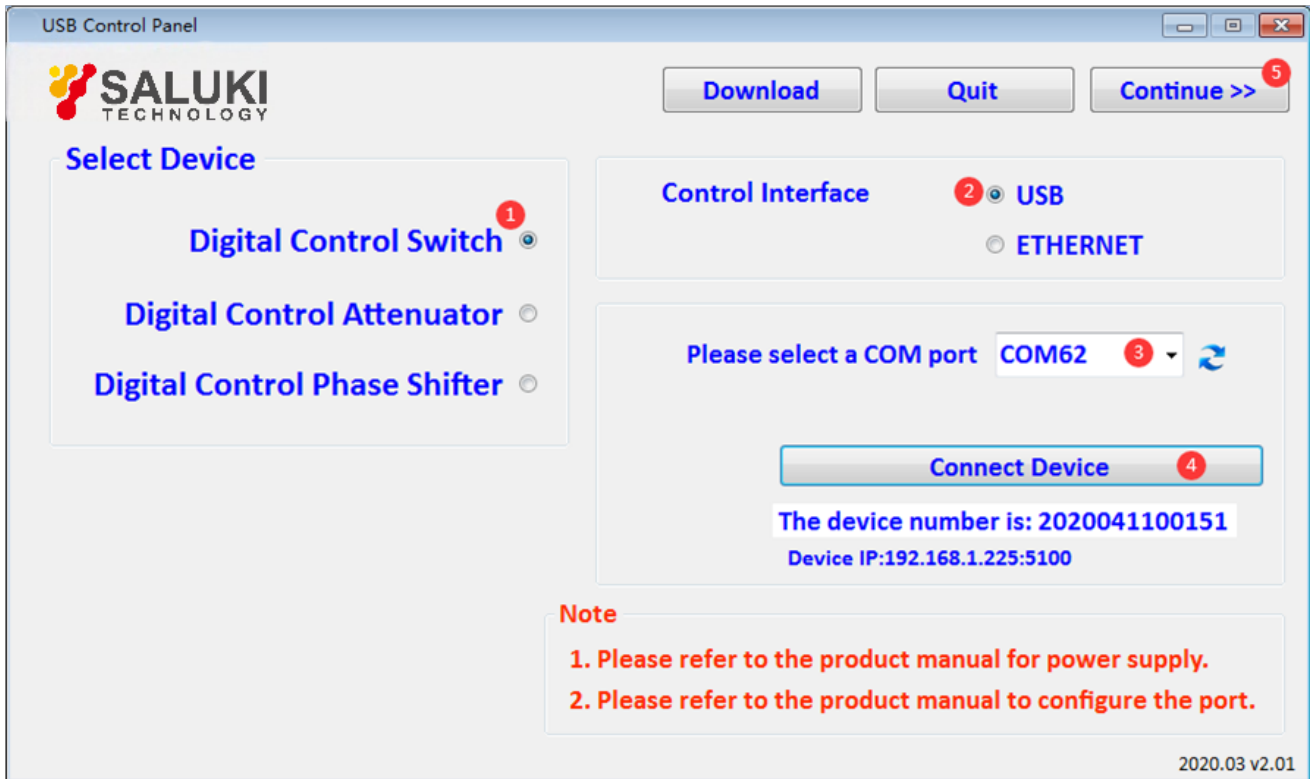
Insertion Loss Temperature Coefficient

Insertion Loss vs. Temperature

IIP3


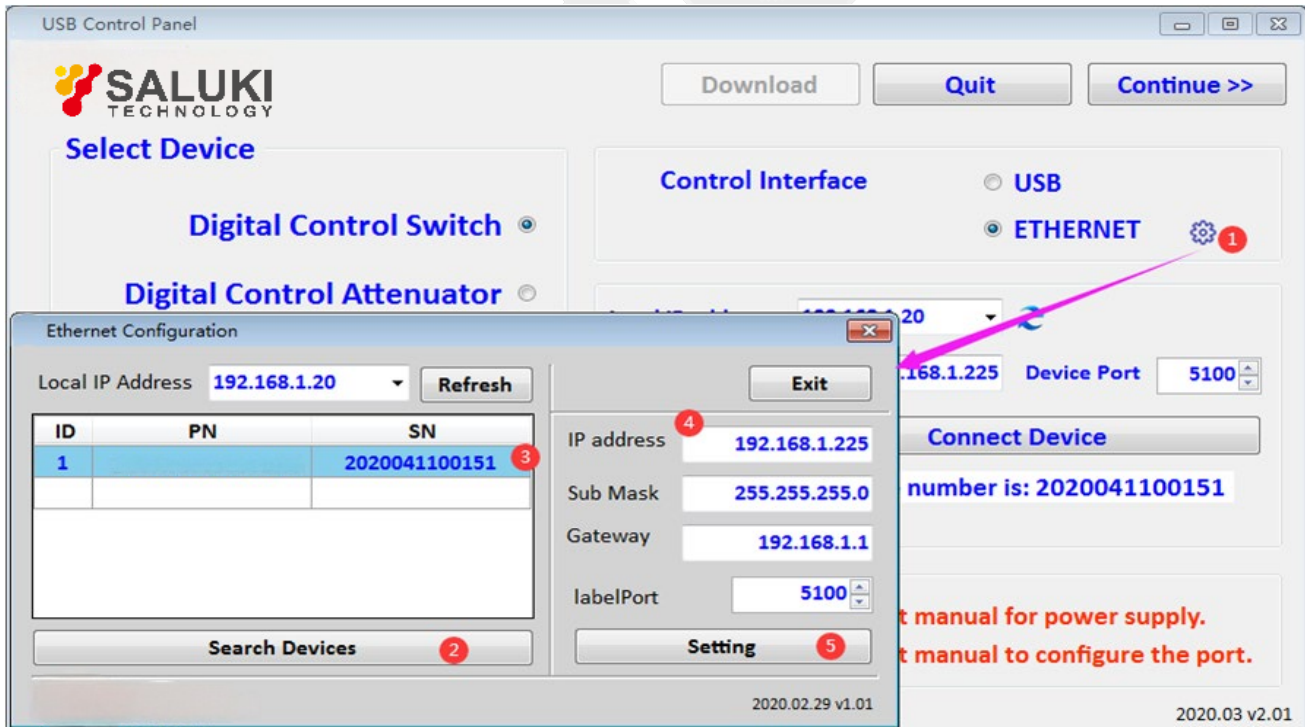
SALUKI TECHNOLOGIES and its affiliates reserve the right to make changes to the product(s) or information contained herein without notice. Visit www.salukitec.com for additional data sheets and product information.

Control Content Description			
Format Requirement	USB (virtual serial port) Configuration	LAN Interface	Range of Parameters
a. All commands must end with a semicolon. b. All commands are case - insensitive. c. Comma is used to separate multiple parameters in commands. d. All commands are suitable for USB(virtual serial port) and LAN interface.	Baud Rate :115200 Data bits : 8 Parity : None Stop bits : 1 Flow Type :None	IP address and Port. Default:192.168.1.22 5:5100 Use 'USB Control Panel.exe' to set.	x(channel):1~n. y(period ,ms): 0.01~2000 z(pulse ,ms): 0.01~2000

Command Specification				
ID	Order	Description	Return	Example
1	*IDN?;	Query product information	Product PN ,SN, Manufacturer , version	*IDN?;
2	Reset;	Reset the product	/	Reset;
3	SW:Sopen x;	Open channel x	SOx	SW:Sopen 2; Return : SO2
4	SW:Sloop x,y,z;	Automatic cycle opening channel x with period as y (ms) and pulse width as z(ms)	SLx	SW:Sloop 2,0.1,0.05; Return :SL2
5	SW:Mloop x1,x2,...,z;	Cycle on channels x1, x2,... with pulse width as z(ms)	MLx1	SW:Mloop 1,2,0.1; Return :ML1
6	SW:Close;	Close all channel. Stop loop ,close all channel.	SC0	SW:Close; Return: SC0

Error Code Query		
ID	Return	Description
1	E1	Missing semicolon
2	E2	Incorrect command
3	E3	Missing space character
4	E4	Incorrect parameter format
5	E5	Out of range parameters





SALUKI TECHNOLOGIES and its affiliates reserve the right to make changes to the product(s) or information contained herein without notice. Visit www.salukitec.com for additional data sheets and product information.