

SEL717/718 Series Programmable DC Electronic Load

3600/6000W, 0-120/240/480/500A, 0-150/500/600V

Key Features

- Six high speed operation modes: CC,CR,CV,CW,CC+CV,CR+CV
- Over current, over voltage, over power, over heating and polarity reversal protection
- High-luminance vacuum fluorescent display (VFD) screen with two line, four channel display
- Intelligent fan system will automatically activate based on changing ambient temperatures
- Soft-start time setting, activating the power supply in accordance with the set voltage value
- Battery test and short-circuit test functions
- Capable of rising edge and falling edge dynamic testing
- Supporting external trigger on either input or output
- External current waveform monitor terminal output terminal
- Supports remote voltage compensation and multi-data storage
- Power-on-self-test, software calibration and standard rack mountable
- Edits arbitrary waveforms in list function
- Available with RS232/RS485/USB serial interfaces

Typical Applications

- Research institute
- Production lines
- Solar cell and fuel cell
- Automotive electronic, aeronautic and astronautic, maritime



The new SEL7XX series programmable DC electronic load is a new generation product designed by Saluki Technology. Incorporating high-performance chips, the SEL7XX series delivers high speed and high accuracy with a resolution of 0.1 mV and 0.01 mA (basic accuracy is 0.03% and basic current rise speed is 2.5 A/ μ s). SEL7XX series have wide application from production lines for cell phone chargers, cell phone batteries, electronic vehicle batteries, switching power supplies, linear power supplies, and LED drivers, to research institute, automotive electronic, aeronautic and astronautic, maritime, solar cell and fuel cell etc. test and measurement applications.

No.367, Fuxing N. Rd.,105 Taipei,Taiwan Tel: +886.909 602 109

sales@salukitec.com www.salukitec.com

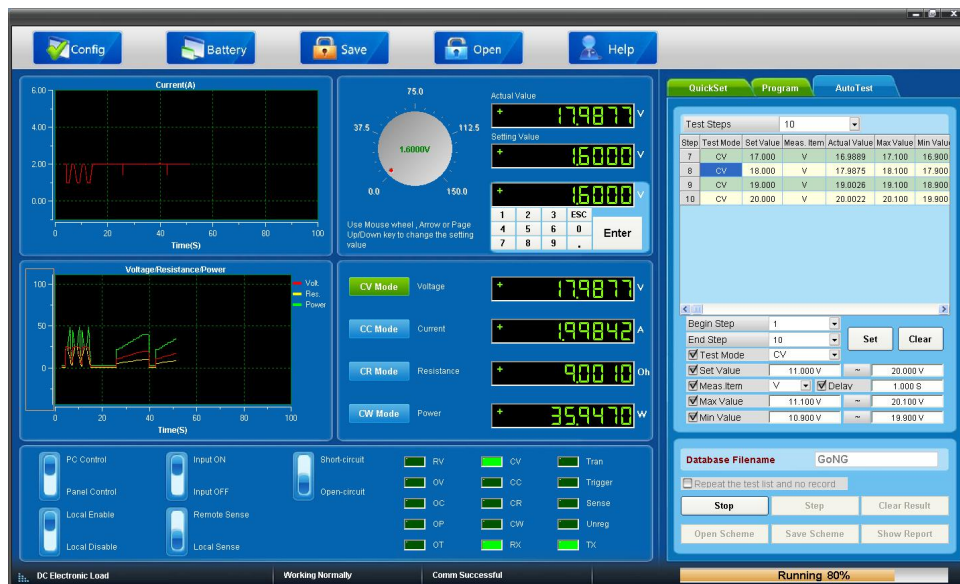


SEL717/718 Series Programmable DC Electronic Load

3600/6000W, 0-120/240/480/500A, 0-150/500/600V

Automatic Test

The SEL7 series electronic load is available of automatic test function. 8 sets of data can be edited at most and 50 steps can be edited in each set of data. Each step can be edited in six working modes (load off mode, constant current mode, constant voltage mode, constant resistance mode, short circuit mode) and can be available of four types of parameters from current comparison, voltage comparison, power comparison and resistance comparison. Besides, the delay time of each step ranges can be also edited. The delay time of each step ranges from 0.1s to 25.5s, considering the quickness and accuracy. Moreover, SEL7 series electronic load equipped with PC monitoring software allows quick editing test steps, test report output to the EXCEL table by computer operation.



Battery Test

Constant current mode is applied in SEL7 series electronic load to test the battery capacity. A program is set to control voltage level. When the voltage of the battery is too low, the electronic load will identify the battery being on the threshold value set or at the margin of insecure state and will stop testing automatically. When the load is in testing procedure, you can see the battery voltage, battery discharge current, power and battery capability that has been spared. If the load is connected with PC software, then you can see the discharge curve of battery discharge. This test can set out the reliability and remaining life of battery.

No.367, Fuxing N. Rd.,105 Taipei,Taiwan Tel: +886.909 602 109

sales@salukitec.com www.salukitec.com



SEL717/718 Series Programmable DC Electronic Load

3600/6000W, 0-120/240/480/500A, 0-150/500/600V



Solar Cell Test

SEL7 series programmable electronic load equipped with solar cell test software can test multi-channel solar cell parameters, query the test report according to the date, preview the test report that need to be printed and fast print the test report, etc by computer operation.



No.367, Fuxing N. Rd.,105 Taipei,Taiwan Tel: +886.909 602 109

sales@salukitec.com www.salukitec.com



SEL717/718 Series Programmable DC Electronic Load

3600/6000W, 0-120/240/480/500A, 0-150/500/600V

Technical Specifications

Model		SEL717		SEL717B		SEL718		SEL718B	
Input Rating	Power	3600W		3600W		6000W		6000W	
	Current	0-240A		0-120A		0-240A		0-120A	
	Voltage	0-150V		0-500V		0-150V		0-500V	
CC Mode	Range	0-24A	0-240A	0-12A	0-120A	0-24A	0-240A	0-12A	0-120A
	Resolution	1mA	10mA	1mA	10mA	1mA	10mA	1mA	10mA
	Accuracy	0.05%+0.05%FS	0.1%+0.05%FS	0.05%+0.05%FS	0.1%+0.05%FS	0.05%+0.05%FS	0.01%+0.05%FS	0.05%+0.05%FS	0.1%+0.05%FS
CV Mode	Range	0.1-19.999V	0.1-150V	0.1-19.999V	0.1-500V	0.1-19.999V	0.1-150V	0.1-19.999V	0.1-500V
	Resolution	1mV	10mV	1mV	10mV	1mV	10mV	1mV	10mV
	Accuracy	0.03%+0.02%FS	0.03%+0.02%FS	0.03%+0.02%FS	0.03%+0.05%FS	0.03%+0.02%FS	0.03%+0.02%FS	0.03%+0.02%FS	0.03%+0.05%FS
CR Mode*	Range	0.03-10KΩ	0.03-5KΩ	0.03-10KΩ	0.03-5KΩ	0.3-10KΩ	0.3-5KΩ	0.03-10KΩ	0.03-5KΩ
	Resolution	16 bit	16 bit	16 bit	16 bit	16 bit	16 bit	16 bit	16 bit
	Accuracy	0.1%+0.1%FS	0.1%+0.2%FS	0.1%+0.1%FS	0.1%+0.1%FS	0.1%+0.1%FS	0.1%+0.1%FS	0.1%+0.1%FS	0.1%+0.1%FS
CW Mode*	Range	0-3600W	0-3600W	0-3600W	0-3600W	0-6000W	0-6000W	0-6000W	0-6000W
	Resolution	1mW	10mW	1mW	10mW	1mW	10mW	1mW	10mW
	Accuracy	0.1%+0.1%FS	0.1%+0.1%FS	0.1%+0.1%FS	0.1%+0.1%FS	0.1%+0.1%FS	0.1%+0.1%FS	0.1%+0.1%FS	0.1%+0.1%FS
V Measurement	Voltage	0-19.999V	0-150V	0-19.999V	0-500V	0-19.999V	0-150V	0-19.999V	0-500V
	Resolution	1mV	10mV	1mV	10mV	1mV	10mV	1mV	10mV
	Accuracy	0.015%+0.03%FS	0.015%+0.03%FS	0.015%+0.03%FS	0.015%+0.05%FS	0.015%+0.03%FS	0.015%+0.03%FS	0.015%+0.03%FS	0.015%+0.05%FS
I Measurement	Current	0-24A	0-240A	0-12A	0-120A	0-24A	0-240A	0-12A	0-120A
	Resolution	0.1mA	1mA	0.1mA	1mA	0.1mA	1mA	0.1mA	1mA
	Accuracy	0.03%+0.15%FS	0.1%+0.08%FS	0.03%+0.15%FS	0.1%+0.08%FS	0.03%+0.05%FS	0.1%+0.08%FS	0.03%+0.05%FS	0.1%+0.08%FS
W Measurement*	Watt	100W	3600W	100W	3600W	100W	6000W	100W	6000W
	Resolution	1mW	10mW	1mW	10mW	1mW	10mW	1mW	10mW
	Accuracy	0.1%+0.1%FS	0.1%+0.1%FS	0.1%+0.1%FS	0.1%+0.1%FS	0.1%+0.1%FS	0.1%+0.1%FS	0.1%+0.1%FS	0.1%+0.1%FS

No.367, Fuxing N. Rd.,105 Taipei,Taiwan Tel: +886.909 602 109

sales@salukitec.com www.salukitec.com



SEL717/718 Series Programmable DC Electronic Load

3600/6000W, 0-120/240/480/500A, 0-150/500/600V

Model		SEL717		SEL717B		SEL718		SEL718B	
Short Circuit	Current (CC)	≐ 26.4A	≐ 264A	≐ 13.2A	≐ 132A	≐ 26.4A	≐ 264A	≐ 13.2A	132A
	Voltage (CV)	0V		0V		0V		0V	
	Resistance (CR)	≐ 8mΩ		≐ 45mΩ		≐ 7mΩ		≐ 35mΩ	
Battery Measurement		Battery Input: 0.1-150V, Max. Measurement: Capacity=999AH, Resolution=0.1mA, Time Range=1S-16H							
Dynamic Measurement		Transition List: 0-25kHz; 5A/uS; T1&T2: 60uS-999S; Accuracy: ±15% offset+10% FS							
CC Soft-startup Time		1ms; 2ms; 5ms; 10ms; 20ms; 50ms; 100ms; 200ms; 500ms; 1000ms Accuracy: ±15% offset+10% FS							
Temperature Range		Operating: 0 to 40°C, Storage: -10°C to 70°C							
Dimension		489.5(W)×357(H)×538.5(D) mm							
Weight		65kg							

Model		SEL717C		SEL718D		SEL718E		SEL718F	
Input Rating	Power	3600W		6000W		6000W		6000W	
	Current	0-500A		0-240A		0-120A		0-480A	
	Voltage	0-150V		0-500V		0-600V		0-150V	
CC Mode	Range	0-50A	0-500A	0-24A	0-240A	0-12A	0-120A	0-48A	0-480A
	Resolution	1mA	10mA	1mA	10mA	1mA	10mA	1mA	10mA
	Accuracy	0.1%+0.05%FS	0.15%+0.1%FS	0.05%+0.05%FS	0.1%+0.05%FS	0.05%+0.05%FS	0.1%+0.08%FS	0.1%+0.15%FS	0.1%+0.05%FS
CV Mode	Range	0.1-19.999V	0.1-150V	0.1-19.999V	0.1-500V	0.1-19.999V	0.1-600V	0.1-19.999V	0.1-150V
	Resolution	1mV	10mV	1mV	10mV	1mV	10mV	1mV	10mV
	Accuracy	0.03%+0.02%FS	0.03%+0.02%FS	0.03%+0.02%FS	0.03%+0.05%FS	0.03%+0.02%FS	0.03%+0.05%FS	0.03%+0.02%FS	0.03%+0.02%FS
CR Mode*	Range	0.03Ω-10KΩ	0.03Ω-5KΩ	0.03Ω-10KΩ	0.03Ω-5KΩ	0.03Ω-10KΩ	0.03Ω-5KΩ	0.03Ω-10KΩ	0.03Ω-5KΩ
	Resolution	16 bit	16 bit	16 digit	16 digit	16 bit	16 bit	16 bit	16 bit
	Accuracy	0.1%+0.1%FS	0.1%+0.1%FS	0.1%+0.1%FS	0.1%+0.1%FS	0.1%+0.1%FS	0.1%+0.15%FS	0.1%+0.1%FS	0.2%+0.15%FS

No.367, Fuxing N. Rd.,105 Taipei,Taiwan Tel: +886.909 602 109

sales@salukitec.com www.salukitec.com



SEL717/718 Series Programmable DC Electronic Load

3600/6000W, 0-120/240/480/500A, 0-150/500/600V

Model		SEL717C		SEL718D		SEL718E		SEL718F	
CW Mode*	Range	0-3600W	0-3600W	0-6000W	0-6000W	0-6000W	0-6000W	0-6000W	0-6000W
	Resolution	1mW	10mW	1mW	10mW	1mW	10mW	1mW	10mW
	Accuracy	0.1%+0.1% FS	0.2%+0.15 %FS	0.1%+0.1% FS	0.1%+0.1% FS	0.1%+0.1% FS	0.1%+0.15 %FS	0.1%+0.1% FS	0.2%+0.15 %FS
V Measurement	Voltage	0-19.999V	0-150V	0-19.999V	0-500V	0-19.999V	0-600V	0-19.999V	0-150V
	Resolution	1mV	10mV	1mV	10mV	0.1mV	10mV	0.1mV	1mV
	Accuracy	0.015%+0.03%FS	0.015%+0.03%FS	0.015%+0.03%FS	0.015%+0.05%FS	0.015%+0.03%FS	0.015%+0.05%FS	0.015%+0.03%FS	0.015%+0.03%FS
I Measurement	Current	0-50A	0-500A	0-24A	0-240A	0-12A	0-120A	0-48A	0-480A
	Resolution	0.1mA	1mA	0.1mA	1mA	0.01mA	0.1mA	0.01mA	0.1mA
	Accuracy	0.1%+0.05%FS	0.15%+0.1%FS	0.03%+0.05%FS	0.1%+0.08%FS	0.05%+0.08%FS	0.05%+0.1%FS	0.08%+0.1%FS	0.2%+0.15%FS
W Measurement*	Watt	100W	3600W	100W	6000W	100W	6000W	100W	6000W
	Resolution	1mW	10mW	1mW	10mW	1mW	10mW	1mW	10mW
	Accuracy	0.1%+0.1%FS	0.1%+0.1%FS	0.1%+0.1%FS	0.1%+0.1%FS	0.1%+0.1%FS	0.1%+0.1%FS	0.1%+0.2%FS	0.2%+0.15%FS
Short Circuit	Current (CC)	≅ 55A	≅ 550A	≅ 26.4A	≅ 264A	≅ 13.2A	≅ 132A	≅ 52.8A	≅ 528A
	Voltage (CV)	0V		0V		0V		0V	
	Resistance (CR)	≅ 3.8mΩ		≅ 30mΩ		≅ 35mΩ		≅ 5mΩ	
Battery Measurement	Battery Input: 0.1-150V, Max. Measurement: Capacity=999AH, Resolution=0.1mA, Time Range=1S-16H								
Dynamic Measurement	Transition List: 0-25kHz; 5A/uS; T1&T2: 60uS-999S; Accuracy: ±15% offset+10% FS								
CC Soft-startup Time	1ms; 2ms; 5ms; 10ms; 20ms; 50ms; 100ms; 200ms; 500ms; 1000ms Accuracy: ±15% offset+10% FS								
Temperature Range	Operating: 0 to 40°C, Storage: -10°C to 70°C								
Dimension	489.5(W)×357(H)×538.5(D) mm								
Weight	65kg								

Note: * voltage and current input value ≥10% full measurement




SEL717/718 Series Programmable DC Electronic Load

3600/6000W, 0-120/240/480/500A, 0-150/500/600V

Ordering Information

Model	SEL717	SEL717B	SEL717C	SEL718	SEL718B	SEL718D	SEL718E	SEL718F
Power	3600W	3600W	3600W	6000W	6000W	6000W	6000W	6000W
Current	0-240A	0-120A	0-500A	0-240A	0-120A	0-240A	0-120A	0-480A
Voltage	0-150V	0-500V	0-150V	0-150V	0-500V	0-500V	0-600V	0-150V

Options

Option No.	Item	Description
M131	RS232 interface communication cable	
M132	RS485 interface communication cable	
M133	USB interface communication cable	

Attention: Due to the need for improvement, the above contents are subject to change without notice.

No.367, Fuxing N. Rd.,105 Taipei,Taiwan Tel: +886.909 602 109

sales@salukitec.com www.salukitec.com

