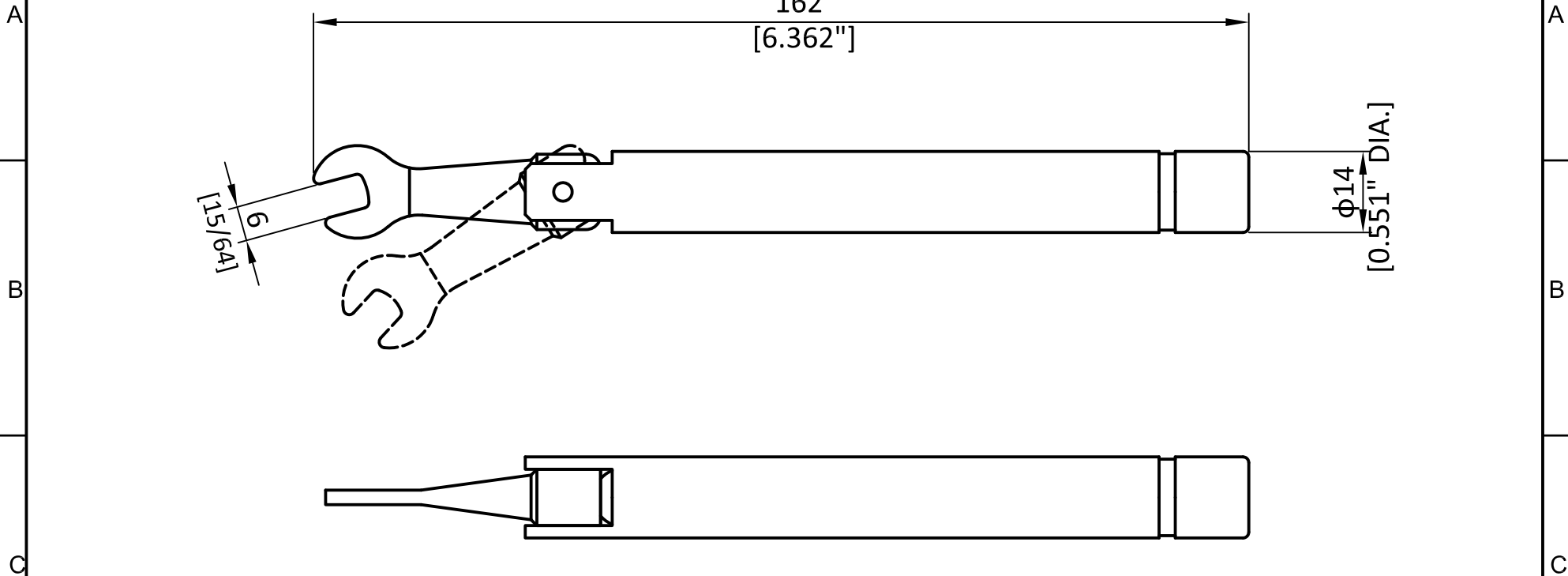




## Torque Wrench

1 2 3 4 5 6



**Materials And Finishes:**

Handle: Aluminum, Anodized  
 Wrench: Tool Steel, Chromeplated

Saluki Technology Inc.

TITLE  
**Torque wrench**

SIZE	<b>A4_a</b>	DIRECTION OF VIEW	
SCALE	<b>1:1</b>		
REV.	<b>V1.0</b>		
SHEET	<b>1/1</b>	DRAWN	<b>Panpan Jia</b>
UNIT	mm	CHECKED	<b>Gang Cao</b>
		APPROVED	<b>Lianying Zhou</b>

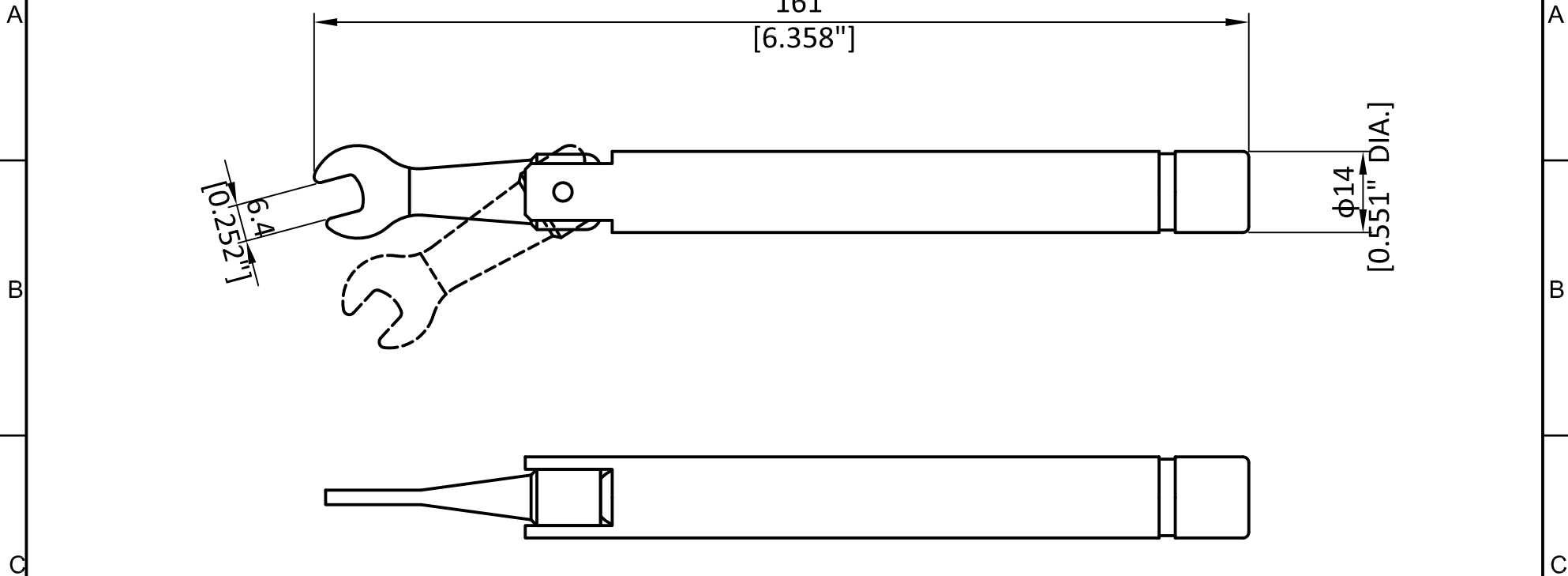
DWG NO.  
**B060**

OUTLINE DRAWING

P/N	Coupling Torque	Accuracy	Color Of Handle
B060T034	0.34 Nm [3 in.lbs]	±6%	Blue
B060T045	0.45 Nm [4 in.lbs]	±6%	Blue

1 2 3 4 5 6

1 2 3 4 5 6



**Materials And Finishes:**

Handle: Aluminum, Anodized  
 Wrench: Tool Steel, Chromeplated

Saluki Technology Inc.

TITLE  
**Torque wrench**

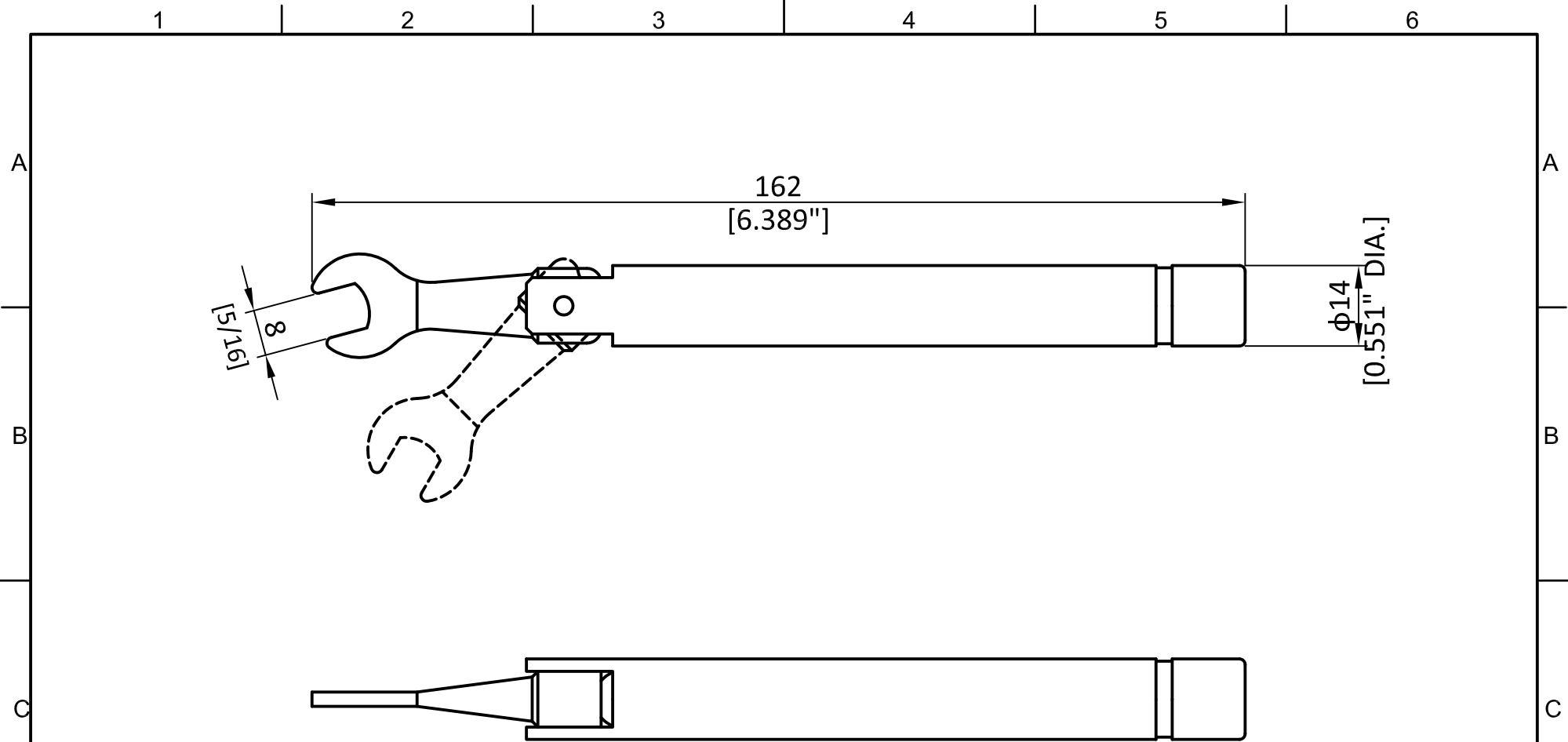
P/N	Coupling Torque	Accuracy	Color Of Handle
B06T056	0.56 Nm [5 in.lbs]	±6%	Blue
B06T090	0.9 Nm [8 in.lbs]	±6%	Blue

SIZE	<b>A4_a</b>	DIRECTION OF VIEW	
SCALE	<b>1:1</b>		
REV.	<b>V1.0</b>	DRAWN	<b>Panpan Jia</b>
SHEET	<b>1/1</b>	CHECKED	<b>Gang Cao</b>
UNIT	mm	APPROVED	<b>Lianying Zhou</b>

DWG NO.  
**B06**

OUTLINE DRAWING

1 2 3 4 5 6



**Materials And Finishes:**

Handle: Aluminum, Anodized  
 Wrench: Tool Steel, Chromeplated

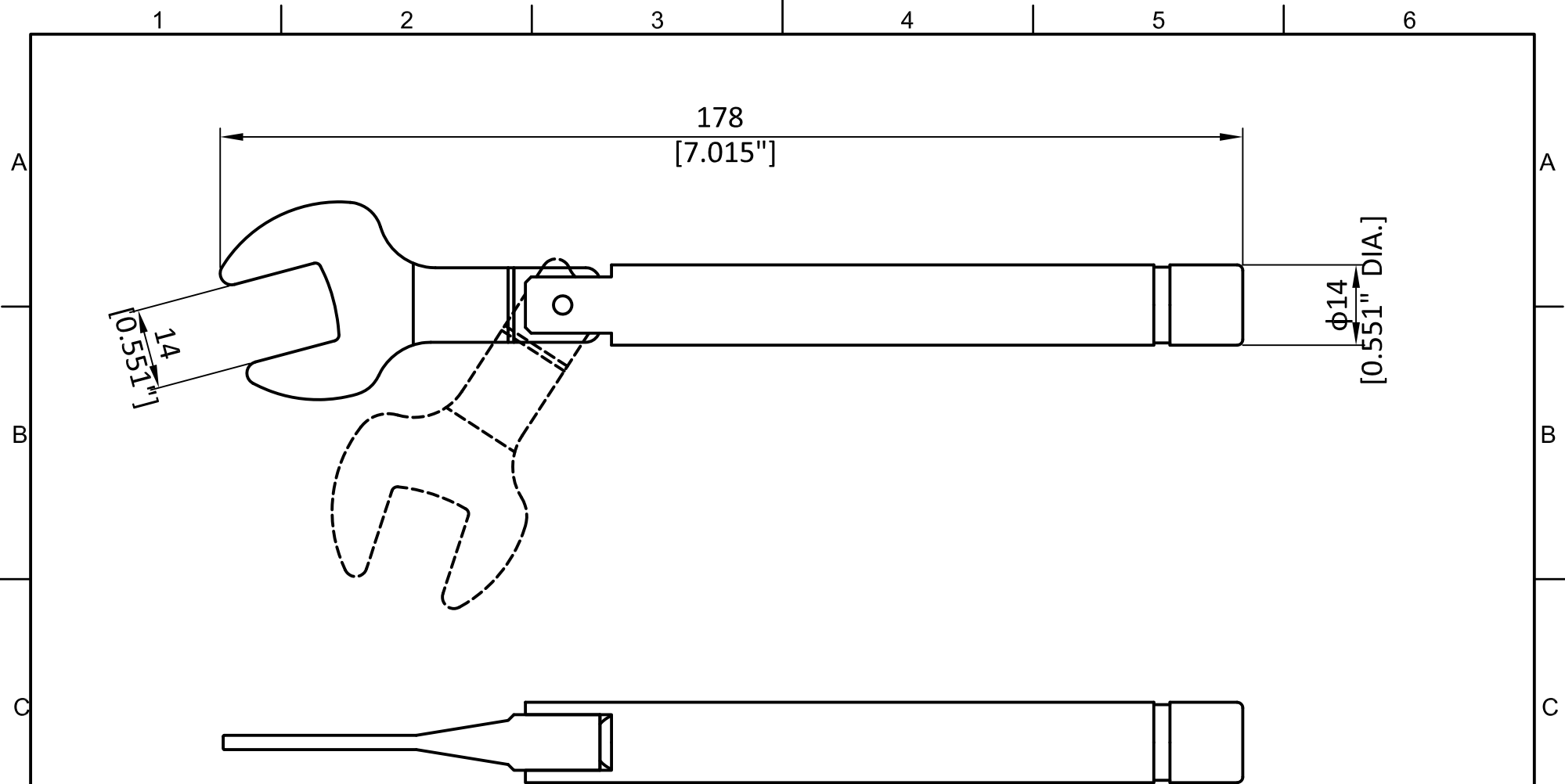
Saluki Technology Inc.

TITLE  
**Torque wrench**

P/N	Coupling Torque	Accuracy	Color Of Handle
B08T056	0.56 Nm [5 in.lbs]	±6%	Blue
B08T090	0.90 Nm [8 in.lbs]	±6%	Blue
B08T135	1.35 Nm [12 in.lbs]	±6%	Blue

SIZE	<b>A4_a</b>	DIRECTION OF VIEW	
SCALE	<b>1:1</b>		
REV.	<b>V1.0</b>	DRAWN	<b>Panpan Jia</b>
SHEET	<b>1/1</b>	CHECKED	<b>Gang Cao</b>
UNIT	mm	APPROVED	<b>Lianying Zhou</b>

DWG NO.  
**B08**  
 OUTLINE DRAWING



**Materials And Finishes:**

Handle: Aluminum, Anodized  
 Wrench: Tool Steel, Chromeplated

Saluki Technology Inc.

TITLE  
**Torque wrench**

P/N	Coupling Torque	Accuracy	Color Of Handle
B140T056	0.56 Nm [5 in.lbs]	±6%	Blue
B140T135	1.35 Nm [12 in.lbs]	±6%	Blue

SIZE	<b>A4_a</b>	DIRECTION OF VIEW	
SCALE	<b>1:1</b>		
REV.	<b>V1.0</b>	DRAWN	<b>Panpan Jia</b>
SHEET	<b>1/1</b>	CHECKED	<b>Gang Cao</b>
UNIT	mm	APPROVED	<b>Lianying Zhou</b>

DWG NO.  
**B140**

OUTLINE DRAWING

1 2 3 4 5 6

A

A

B

B

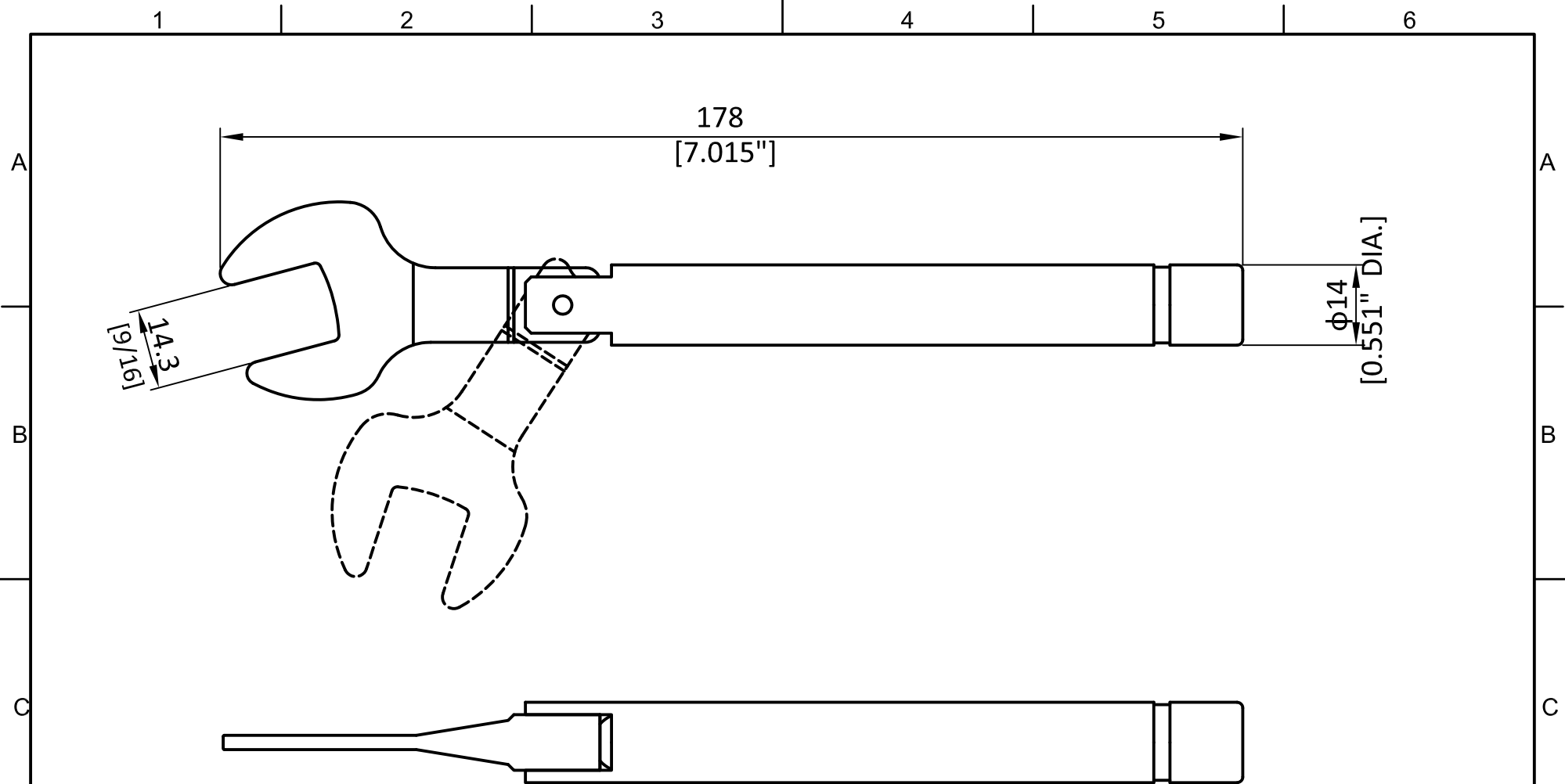
C

C

D

D

1 2 3 4 5 6



**Materials And Finishes:**

Handle: Aluminum, Anodized  
 Wrench: Tool Steel, Chromeplated

Saluki Technology Inc.

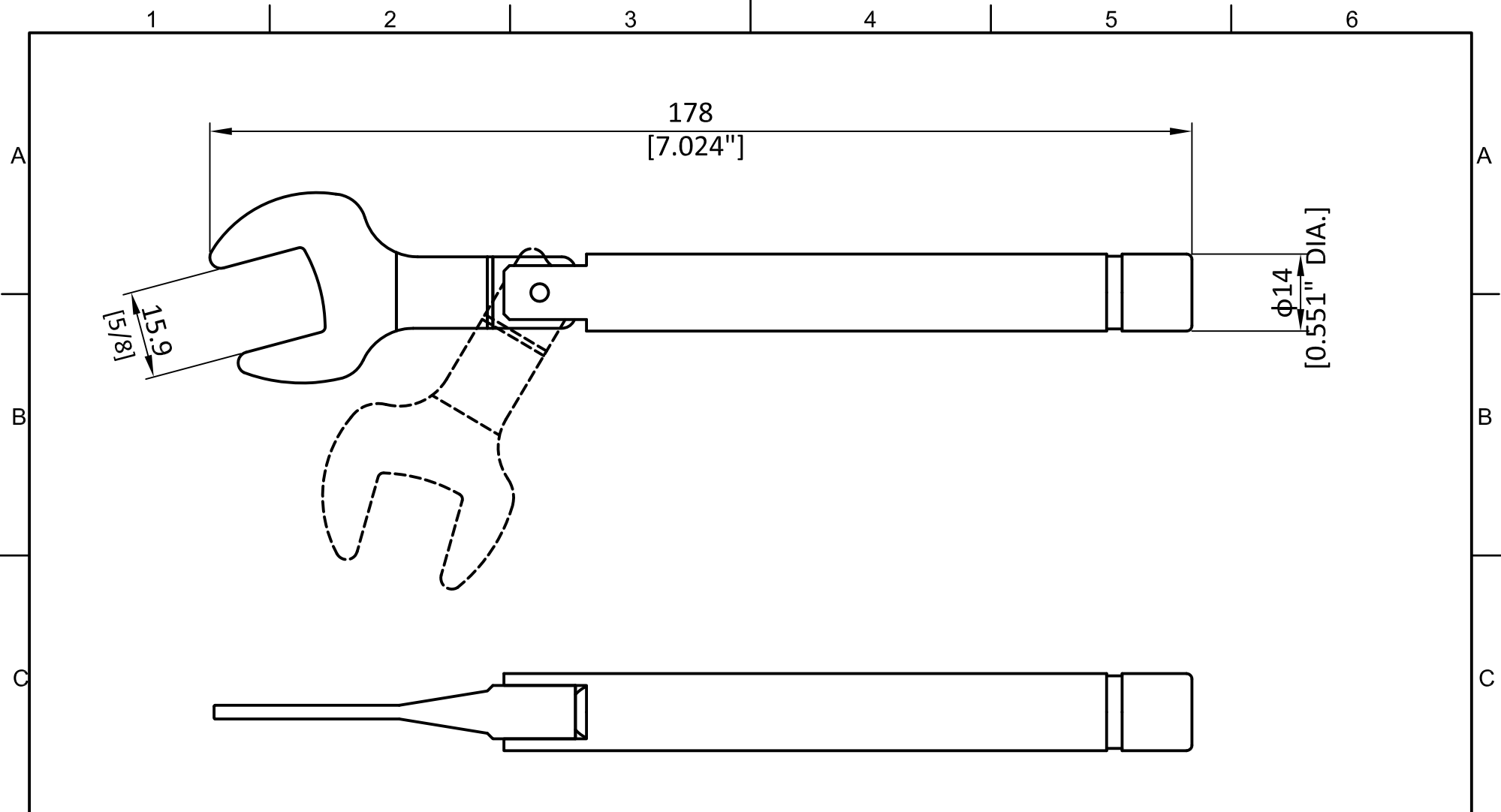
TITLE  
**Torque wrench**

P/N	Coupling Torque	Accuracy	Color Of Handle
B14T056	0.56 Nm [5 in.lbs]	±6%	Blue
B14T135	1.35 Nm [12 in.lbs]	±6%	Blue

SIZE	<b>A4_a</b>	DIRECTION OF VIEW	
SCALE	<b>1:1</b>		
REV.	<b>V1.0</b>	DRAWN	<b>Panpan Jia</b>
SHEET	<b>1/1</b>	CHECKED	<b>Gang Cao</b>
UNIT	mm	APPROVED	<b>Lianying Zhou</b>

DWG NO.  
**B14**

OUTLINE DRAWING



**Materials And Finishes:**

Handle: Aluminum, Anodized  
 Wrench: Tool Steel, Chromeplated

Saluki Technology Inc.

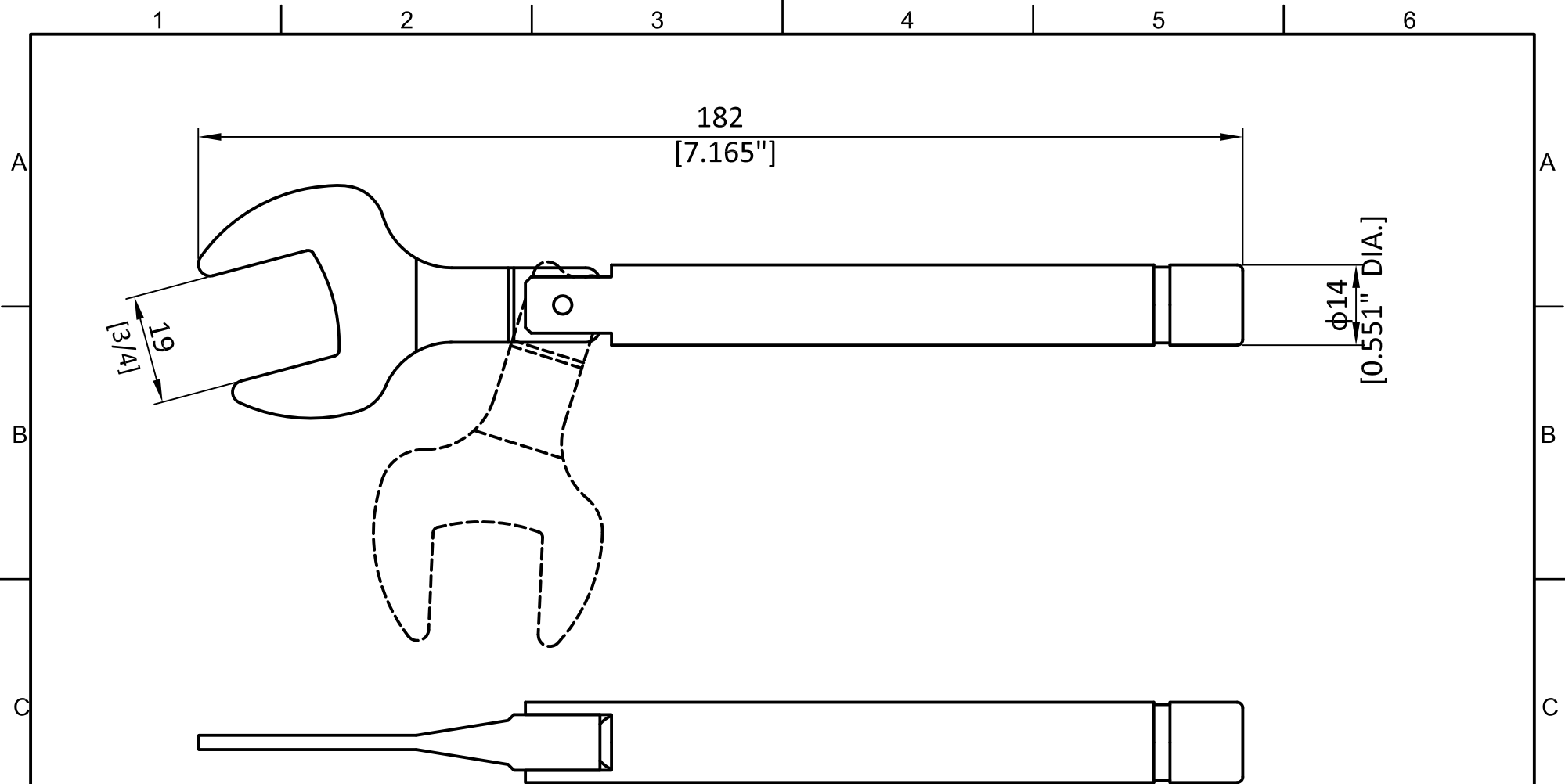
TITLE  
**Torque wrench**

P/N	Coupling Torque	Accuracy	Color Of Handle
B16T056	0.56 Nm [5 in.lbs]	±6%	Blue
B16T135	1.35 Nm [12 in.lbs]	±6%	Blue

SIZE	<b>A4_a</b>	DIRECTION OF VIEW	
SCALE	<b>1:1</b>		
REV.	<b>V1.0</b>	DRAWN	<b>Panpan Jia</b>
SHEET	<b>1/1</b>	CHECKED	<b>Gang Cao</b>
UNIT	mm	APPROVED	<b>Lianying Zhou</b>

DWG NO.  
**B16**

OUTLINE DRAWING



**Materials And Finishes:**

Handle: Aluminum, Anodized  
 Wrench: Tool Steel, Chromeplated

Saluki Technology Inc.

TITLE  
**Torque wrench**

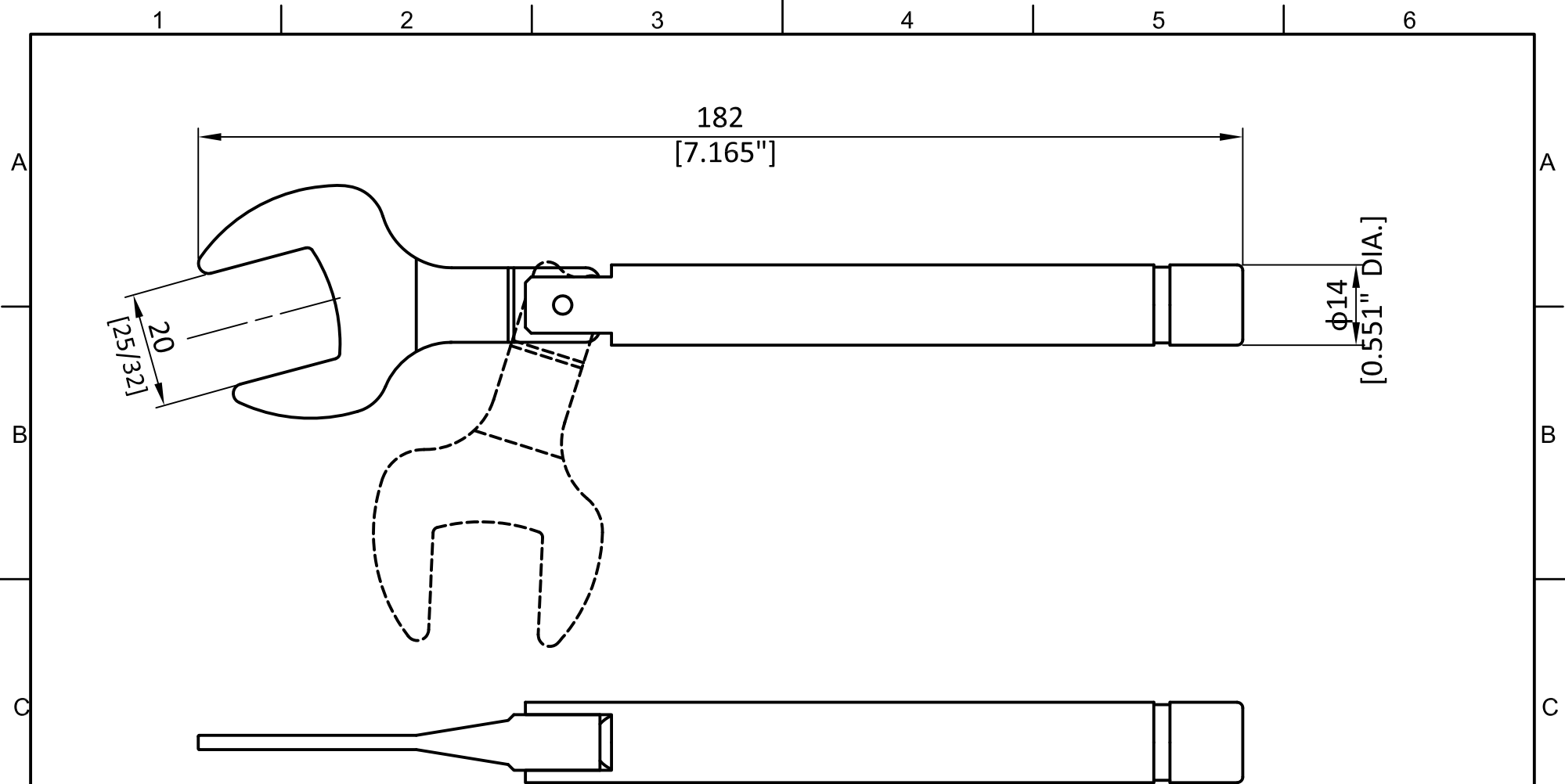
P/N	Coupling Torque	Accuracy	Color Of Handle
B19T090	0.90 Nm [8 in.lbs]	±6%	Blue
B19T135	1.35 Nm [12 in.lbs]	±6%	Blue

SIZE	<b>A4_a</b>	DIRECTION OF VIEW	
SCALE	<b>1:1</b>		
REV.	<b>V1.0</b>	DRAWN	<b>Panpan Jia</b>
SHEET	<b>1/1</b>	CHECKED	<b>Gang Cao</b>
UNIT	mm	APPROVED	<b>Lianying Zhou</b>

DWG NO.  
**B19**

OUTLINE DRAWING





**Materials And Finishes:**

Handle: Aluminum, Anodized  
 Wrench: Tool Steel, Chromeplated

Saluki Technology Inc.

TITLE  
**Torque wrench**

P/N	Coupling Torque	Accuracy	Color Of Handle
B20T090	0.90 Nm [8 in.lbs]	±6%	Blue
B20T135	1.35 Nm [12 in.lbs]	±6%	Blue

SIZE	<b>A4_a</b>	DIRECTION OF VIEW	
SCALE	<b>1:1</b>		
REV.	<b>V1.0</b>	DRAWN	<b>Panpan Jia</b>
SHEET	<b>1/1</b>	CHECKED	<b>Gang Cao</b>
UNIT	mm	APPROVED	<b>Lianying Zhou</b>

DWG NO.  
**B20**

OUTLINE DRAWING