

S2106S SERIES OPTICAL TIME DOMAIN REFLECTOMETER



12 Function Modules
Meet all your test



IONM-Event Map
Intelligent link analysis



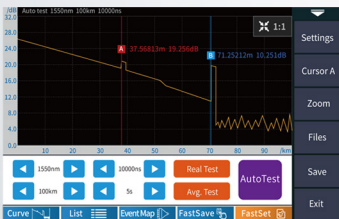
4.3 inch Outdoor Enhanced
Multi-points color touch screen



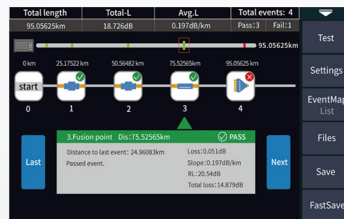
Multi Task Operation
VFL and LS run in the background



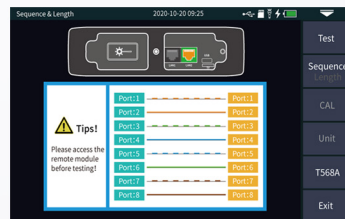
RJ45 Test
Broadband install and maintain



Expert OTDR



Event Map



RJ45 Cable Sequence



RJ45 Cable Tracker

Introduction

Saluki S2106S series is integrated 12 functions: Auto OTDR, Expert OTDR, LS, OPM, VFL, Event map, Optical loss test, RJ45 sequence, RJ45 tracker, RJ45 length, Flashlight and End face detection. Support one click screen capture and gesture zoom in and out curve.

Applications

- ✧ FTTx test
- ✧ Lab and factory test
- ✧ Live fiber troubleshoot
- ✧ Broadband install and maintain
- ✧ CATV/ LAN/ Metro/ Access network test

Product Features

High performance test

- Up to 26dB dynamic range
- 2.5m event blind zone
- Test fiber with live signal
- Multi task simultaneous operation
- Support frequency/ wave identification

Multifunctional test - High configuration

- Expert OTDR
- Intelligent optical network map (IONM)
- RJ45 cable length measurement
- RJ45 line tracker measurement
- Fiber end face detection
- Optical loss test

Multifunctional test - Standard configuration

- Auto OTDR
- Stable laser source (LS)
- Visual red light fault location (VFL)
- Optical power meter (OPM)
- RJ45 Ethernet cable sequence measurement
- Flashlight

Convenient operation

- 4.3 inch multi-points touch screen
- File auto saving
- One click screen capture
- Test results automatic analysis

Convenient data processing

- SOR file batch processing
- Remote upgrading
- Batch export of USB data files

High reliability

- 12h continuous measurement time
- 20h super long standby
- 1.5 meter drop test
- Waterproof and splash proof
- Operation temperature -10°C to 50°C

Technical Specifications

Model	S2106S-S2	S2106S-S3	S2106S-F1 (live test)	S2106S-F2 (live test)
Fiber Type	G.652 SM			
Wavelength	1550nm ± 20nm	1310/1550nm ± 20nm	1310nm ± 20nm	1550nm ± 20nm
Max. Dynamic Range	24dB	26/24dB	26dB	24dB
Event Blind Zone	2.5m			
ATT Blind Zone	8m			
Test Range	500m/1km/2km/4km/8km/16km/32km/64km/100km			
Pulse Width	3ns/5ns/10ns/20ns/30ns/50ns/80ns/160ns/320ns/500ns/800ns/1us/2us/3us/5us/8us/10us/20us			
Ranging Accuracy	± (1m + Sampling interval + 0.005% x Test distance)			
Linearity	≤ 0.05dB/dB			
Reflection Accuracy	±3dB			
Sampling Points	16k - 128k			
Sampling Resolution	0.05m - 8m			
Data Storage	Internal: 8GB (≥200,000 curves)			
Data Interface	USB Type C			
Optical Interface	FC/UPC (Interchangeable SC, ST)			
Standard VFL Output Power	≥ 10mW			
RJ45 Cable Test Distance	≥ 300m			
Display & Size	4.3 inch multi-points capacitive touch screen		173mm*109mm*45mm & 0.5kg	
Note: S2106S-F1 module can test fiber with 1490/1550nm signal, and F2 module can test fiber with 1310/1490nm signal (power ≤-5dBm)				