

S2105 SERIES OPTICAL TIME DOMAIN REFLECTOMETER



12 Function Modules
Meet all your test



iONM-Event Map
Intelligent link analysis



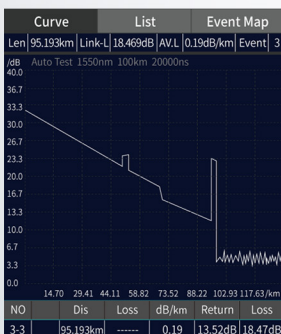
4.3 inch Outdoor Enhanced
Multi-points color touch screen



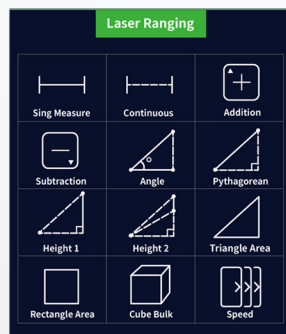
Multi Task Operation
VFL and LS run in the background



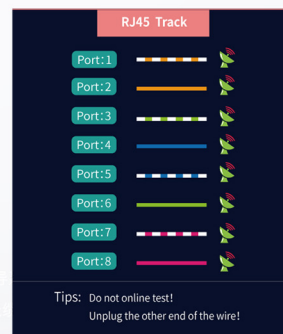
RJ45 Test
Broadband install and maintain



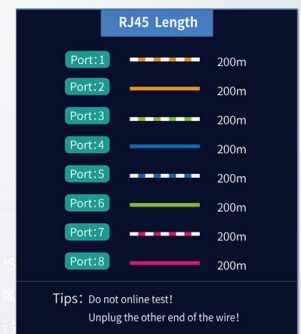
OTDR / Event Map



Laser Ranging



RJ45 Cable Tracker



RJ45 Cable Length

Introduction

Saluki S2105 series is integrated 12 functions: Auto OTDR, Expert OTDR, LS, OPM, VFL, Event map, Optical loss test, RJ45 sequence, RJ45 tracker, RJ45 length, Laser ranging and Flashlight. It the first multi-functional intelligent and high-precision test instrument of Android system style.

Applications

- ※ FTTx test
- ※ Lab and factory test
- ※ Live fiber troubleshoot
- ※ Broadband install and maintain
- ※ CATV/ LAN/ Metro/ Access network test

Product Features

High performance test

- Up to 28dB dynamic range
- 1.2m event blind zone
- Multi task simultaneous operation
- Support frequency/ wave identification
- Online detection -APD effective protection

Multifunctional test - High configuration

- Expert OTDR
- Intelligent optical network map (IONM)
- RJ45 cable length measurement
- RJ45 line-tracker measurement
- Laser ranging (0.05m - 40m)
- Optical loss test

Multifunctional test - Standard configuration

- Auto OTDR
- Stable laser source (LS)
- Visual red light fault location (VFL)
- Optical power meter (OPM)
- RJ45 Ethernet cable sequence measurement
- Flashlight

Convenient operation

- 4.3 inch multi-points touch screen
- File auto saving
- One-click automatic test
- Test results automatic analysis

Convenient data processing

- SOR file batch processing
- Remote upgrading
- Batch export of USB data files

High reliability

- 12h continuous measurement time
- 20h super long standby
- 1.5 meter drop test
- Waterproof and splash proof
- Operation temperature -10°C to 50°C

Technical Specifications

Model	S2105-S1	S2105-P1F1	S2105-P2F1	S2105-M1
Fiber Type	SM			MM
Wavelength	1310nm/1550nm	1625nm	1650nm	850nm/1300nm
Max. Dynamic Range	28/26dB	26dB	26dB	22/24dB
Event Blind Zone	1.2m	1.2m	1.2m	1.5m
ATT Blind Zone	5m	5m	5m	6m
Test Range	500m/1km/2km/4km/8km/16km/32km/64km/100km			
Pulse Width	3ns/5ns/10ns/20ns/30ns/50ns/80ns/160ns/320ns/500ns/800ns/1us/2us/3us/5us/8us/10us/20us			
Ranging Accuracy	± (1m + Sampling interval + 0.005% x test distance)			
Loss Accuracy	±0.05dB/dB			
Reflection Accuracy	±3dB			
Sampling Points	16k - 256k			
Sampling Resolution	0.05m - 8m			
File Format	SOR standard file format			
Data Storage	Internal: 8GB (≥200,000 curves)			
Data Interface	USB Type C			
Optical Interface	FC/UPC (Interchangeable SC, ST)			
Standard VFL Output Power	≥ 10mW			
RJ45 Cable Test Distance	≥ 300m			
Display & Size	4.3 inch multi-points capacitive touch screen		174mm*92mm*45mm & 0.4kg	