

S2106 SERIES OPTICAL TIME DOMAIN REFLECTOMETER



7 Function Modules
Meet all your test



iONM
Intelligent optical network map



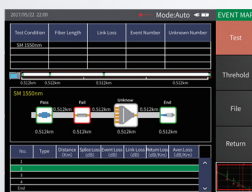
Signal detection
Effective protection of APD



Remote upgrade
Latest technical support



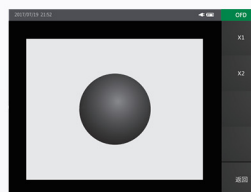
SOR Batch processing
Data fast processing



Event Map



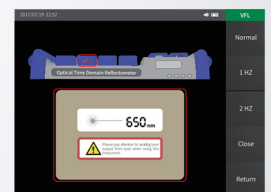
LS



OFD



OPM



VFL

Introduction

Saluki S2106 series optical time domain reflectometer is a new generation of portable and intelligent instrument for testing optical fiber communication system. Adopt 5.6 inch color touch screen, 20 hours long standby, multi-functional integration can help customers effectively solve the field test and maintenance.

Applications

- ※ FTTx test
- ※ Lab and factory test
- ※ Live fiber troubleshoot
- ※ CATV/ LAN/ Metro/ Access network test

Product Features

High performance test

- Dynamic range up to 45dB
- Less than 0.8m ultra short event blind area
- Automatic and manual measurement setting
- Link optical nondestructive testing
- Signal optical detection function (Effective protection of APD)

Convenient operation

- One button automatic test
- Touch/ key dual operation
- 5.6 inch color TFT LCD display
- Ethernet remote control function
- Multiple wavelength simultaneous testing
- Unique diagnostic function for test results

High reliability

- 20h super long standby
- 1.5 meter drop test
- Waterproof and splash proof
- Operation temperature -10°C to 50°C

Multifunctional test - Standard configuration

- OTDR
- Stable laser source (LS)
- Visual red light fault location (VFL)
- Optical power meter (OPM)

Multifunctional test - High configuration

- Intelligent optical network map (iONM)
- Optical fiber end face detection (OFD)
- Optical loss test (OLT)
- Fault location

Convenient data processing

- Automatic data storage
- SOR batch processing
- Remote upgrade function

Technical Specifications

Model	S2106-S1	S2106-S2	S2106-S3	S2106-S4	S2106-T1	S2106-T2	S2106-F1	S2106-M1	S2106-SM1
Fiber Type	SM							MM	SM/MM
Wavelength	1310nm/1550nm				1310nm/ 1490nm/ 1550nm	1310nm/ 1550nm/ 1625nm	1310nm/ 1490nm/ 1550nm/ 1625nm	850nm/ 1300nm	850nm/ 1300nm/ 1310nm/ 1550nm
Max. Dynamic Range	35/33dB	38/36dB	42/40dB	45/43dB	37/35/35dB	37/35/35dB	37/35/35/35dB	26/28dB	26/28/35/33dB
Event Blind Zone	1m	0.8m	0.8m	0.8m	0.8m	0.8m	0.8m	1m	1m
ATT Blind Zone	6m	6m	6m	6m	6m	6m	6m	6m	6m
Test Range	500m/1km/2km/4km/8km/16km/32km/64km/128km/256km								
Pulse Width	3ns/5ns/10ns/30ns/50ns/80ns/160ns/320ns/500ns/800ns/1000ns/3000ns/5000ns/8000ns/10000ns/20000ns								
Ranging Accuracy	± (0.75m + Sampling interval + 0.005% x Test distance)								
Loss Accuracy	±0.05dB/dB								
Reflection Accuracy	±3dB								
Sampling Points	16k - 256k								
Sampling Resolution	0.05m - 16m								
File Format	SOR standard file format								
Data Storage	Internal: 100M (≤3000 curves), External: 4GB								
Data Interface	USB, Mini USB, 10M/100M Ethernet								
Optical Interface	FC/UPC (Interchangeable SC, ST)								
Standard VFL Output Power	≥ 10mW								
Display & Size	5.6 inch color LCD touch screen					227mm*160mm*70mm			