

# S2103 Mini-pro Optical Time Domain Reflectometer

Multi-Functions: OTDR / OPM / LS / VFL / Event Map / RJ45 Test / Flashlight

## Key Features

- 26dB dynamic range and 2.5m event blind zone
- Unique **RJ45 Test** including Ethernet cable sequence, cable length and line-tracker measurement
- One button automatic test and real time test
- Built-in Optical Power Meter Function (OPM)
- Built-in Fiber Visual Fault Locator Function (VFL)
- Built-in Laser Source Function (LS)
- Built-in Intelligent Optical Network Mapper Function (iONM)
- Online detection - APD effective protection
- Unique function for self-diagnosis on test result
- English display and input, automatic data storage
- 3.5 inch color LCD screen and IP65 protection level for outdoor use

## Typical Applications

- FTTx test
- Broadband install and maintain
- CATV network testing
- Access network testing
- LAN network testing
- Metro network testing
- Lab and factory testing
- Live fiber troubleshooting

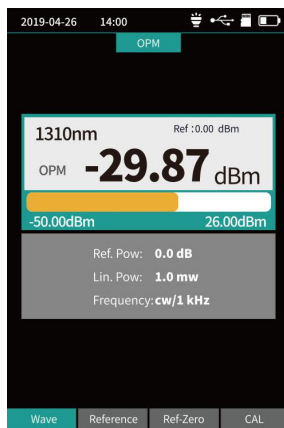


Saluki S2103 Series Mini-pro Optical Time Domain Reflectometer is one small and economic handheld OTDR. The unique RJ45 Ethernet Cable Sequence Test can make the broadband install and maintain more convenient and faster. S2103 is the photoelectric integration machine, including eight functional modules which can meet all you need.

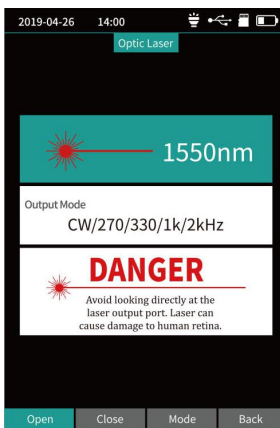
# S2103 Mini-pro Optical Time Domain Reflectometer

Multi-Functions: OTDR / OPM / LS / VFL / Event Map / RJ45 Test / Flashlight

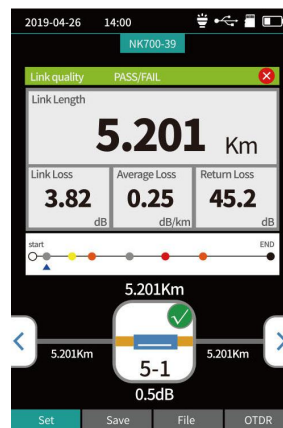
## Main Functions



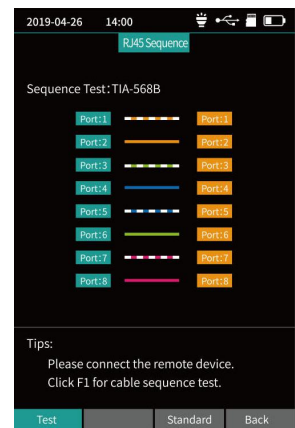
OPM



LS



iONM  
(Event Map)



RJ45 Test



RJ45 Sequence



RJ45 Tracker

## Technical Specifications

Mini-Pro OTDR		
Model	S2103S	S2103D
Wavelength	1550nm±20nm	1310/1550nm±20nm

No.367, Fuxing N. Rd., 105 Taipei, Taiwan Tel: +886.909 602 109  
sales@salukitec.com [www.salukitec.com](http://www.salukitec.com)



# S2103 Mini-pro Optical Time Domain Reflectometer

Multi-Functions: OTDR / OPM / LS / VFL / Event Map / RJ45 Test / Flashlight

Fiber Type	G.652	
Dynamic Range ①	24dB	26dB/24dB
Event Blind Zone ②	2.5m	
Attenuation Blind Zone	8m	
Test Range	500m - 60km	
Pulse Width	3ns - 10us	
Ranging Accuracy	$\pm (1m + \text{Sampling interval} + 0.005\% \times \text{Test distance})$	
Loss Accuracy	$\pm 0.2\text{dB/dB}$	
Sampling Points	16k - 128k	
Sample Resolution	0.05m - 8m	
Reflection Accuracy	$\pm 3\text{dB}$	
Data Storage	Internal: $\geq 600$ , External: TF card	
Laser Safety Level	Class II	
File Format	SOR (standard format)	
Connector	FC/UPC (Interchangeable SC, ST)	
<b>OPM</b>		
Wavelength Range	800nm - 1700nm	
Connector	Universal joint FC/SC/ST	
Measurement Range	-50dBm to +26dBm	
Uncertainty	$\pm 5\%$	
Frequency Identification	CW/270/330/1k/2kHz	
Display Unit	dB, dBm	
Calibration Wavelength	850/980/1300/1310/1490/1550/1625/1650nm	
<b>LS</b>		
LD Type	FP-LD	
Wavelength	1550nm $\pm$ 20nm	1310/1550nm $\pm$ 20nm

No.367, Fuxing N. Rd., 105 Taipei, Taiwan Tel: +886.909 602 109

sales@salukitec.com [www.salukitec.com](http://www.salukitec.com)



# S2103 Mini-pro Optical Time Domain Reflectometer

Multi-Functions: OTDR / OPM / LS / VFL / Event Map / RJ45 Test / Flashlight

Output Power	≥ -2dBm
Stability	CW, ±0.5dB/15min
Connector	FC/UPC (Interchangeable SC, ST)
<b>VFL</b>	
Wavelength	650nm ±20nm
Output Power	≥ 10mW
Mode	CW/1Hz/2Hz
Connector	FC/SC/ST
<b>RJ45 Cable Length Measurement</b>	
Test Range	300m
<b>Functions: OTDR/ EVENT MAP/ OPM/ LS/ VFL/ RJ45 Sequence/ RJ45 Cable Tracker/ RJ45 Line length/ Flashlight</b>	

## NOTE:

- ① Test temperature is  $25 \pm 2^{\circ}\text{C}$ , the maximum pulse width, average time is more than 30s.
- ② Test conditions of Event Dead Zone are minimum range, minimum pulse width, reflection loss of optical fiber end surface (>45dB), typical value.

## General Information

Display	3.5 inch color LCD screen, Toughened glass, English Interface
Data Interface	Micro USB
External Storage	TF Card
Battery Life	Standby >20h, Measuring time >12h
Power Supply	Polymer Li-battery: 3.7V, 4000mAh Adapter: 5VDC, 2A
Size	173mmx82mmx37mm
Weight	≤350g

No.367, Fuxing N. Rd., 105 Taipei, Taiwan Tel: +886.909 602 109

sales@salukitec.com [www.salukitec.com](http://www.salukitec.com)



# S2103 Mini-pro Optical Time Domain Reflectometer

Multi-Functions: OTDR / OPM / LS / VFL / Event Map / RJ45 Test / Flashlight

Environment	Operating Temperature: -10 to +50°C , Storage: -40 to +70°C,
Relative Humidity	0 -95% Non condensing

## Standard Package

No.	Item	Qty
1	OTDR Host	1 Set
2	AC/DC Power Adaptor	1 PC
3	CD (containing client simulation analysis software)	1 PC
4	Data Line	1 PC
5	SC/UPC Adapter	1 PC
6	Calibration Certificate	1 PC
7	User Manual	1 PC
8	Clean Cotton Slices	10 PCS
9	Instrument Backpack	1 PC

*Attention: The OTDR interface type is standard FC/UPC, FC/APC optional if needed. Due to the need for improvement, the above contents are subject to change without notice.*